

NOTES:

1. MATERIAL:

- 1-1 HOUSING:HIGH TEMP THERMOPLASTIC,UL94V-0.
- 1-2 POWER CONTACT:HIGH PERFORMANCE COPPER ALLOY

PLATING : 50u" MIN NICKEL UNDERPLATING OVER ALL

2. REFLOW SOLDER CAPABLE TO 260°C PER ACES SPEC.

3. SPEC. PLS. REFER TO PS-52931-XXXX

4. PACKAGE PLS. REFER TO 52932-XXX-TRAY

5. PART NUMBER

52932-XXX X X-1 0 1

PIN NO. \_\_\_\_\_

050=50 POS.

PACKING. \_\_\_\_\_

2=TRAY

CONTACT PLATING. \_\_\_\_\_

K:30u" Au ON CONTACT AREA

100u" MAT TIN ON TAIL

CUSTOMIZED & TAIL LENGTH

NO.	DIM A
1	2.70

PCB RETENTION

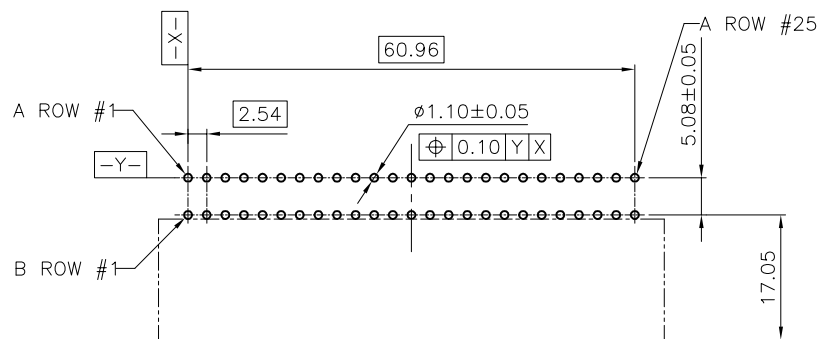
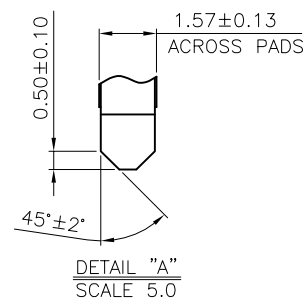
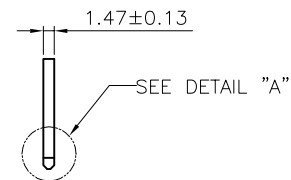
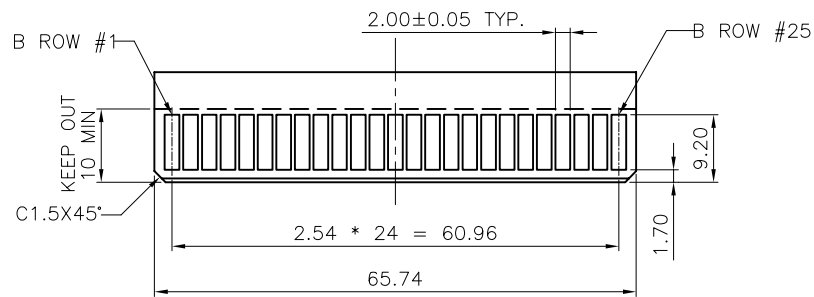
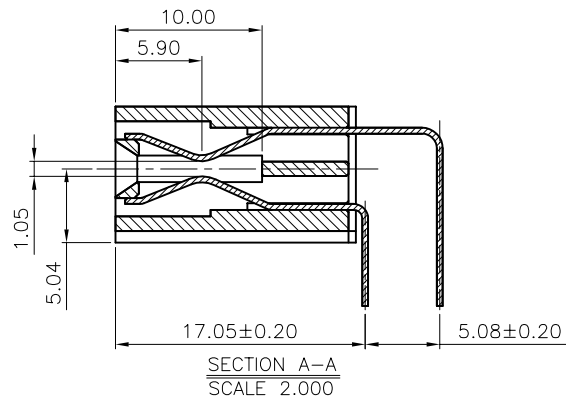
0=NONE

DIRECTION & TAIL OPTION

1=RT

DIRECTION	TAIL OPTION
R   RIGHT ANGLE	T   THROUGH HOLE

一般公差 TOLERANCES X ±0.5 .XX ±0.15 X ±0.25 .XXX ±0.1 ANGLES ±2°	<b>宏致電子股份有限公司</b> <b>Aces Electronics Co.,Ltd.</b>	
檢驗尺寸標示 SYMBOLS ⊕ ⊗ INDICATE CLASSIFICATION DIMENSION ⊕ MARK IS CRITICAL DIM. ⊗ MARK IS MAJOR DIM.	品名 (TITLE) POWER CARD EDGE 2.54 PITCH R/A TYPE 圖號 (DWG NO.) 52932-XXXXX-101	製圖 (DR) 14'/04/17 Simon 審核 (CHKD) Mark 核准 (APPD) Grand
表面處理 (FINISH) _____	比例 (SCALE) 1:1	單位 (UNITS) mm
		張數 (SHEET) 1 OF 2
		SIZE A4
		REV 0



一般公差 <b>TOLERANCES</b> X ±0.5 .XX ±0.15 X ±0.25 .XXX ±0.1 ANGLES ±2°	<b>宏致電子股份有限公司</b> <b>Aces Electronics Co.,Ltd.</b>	
檢驗尺寸標示 SYMBOLS  INDICATE CLASSIFICATION DIMENSION MARK IS CRITICAL DIM. MARK IS MAJOR DIM.	品名 (TITLE) POWER CARD EDGE 2.54 PITCH R/A TYPE 圖號 (DWG.NO) 52932-XXXXX-101	製圖 (DR) 14'/04/17 Simon 審核 (CHKD) Mark 核准 (APPD) Grand
表面處理 (FINISH)	比例 (SCALE) 1:1	單位 (UNITS) mm
		張數 (SHEET) 2 OF 2
		SIZE A4
		REV 0